

# Blue & Grey Half Marathon Plan of Action

---

Version: 20241202 v4 (pdf of OpPlan for download - [BGHalfOpPlan.pdf](#))

---

## Overview

---

- [Team](#)
  - [Assignments](#)
  - [Course Access](#)
  - [Check-In](#)
  - [Mission](#)
    - [Parking](#)
    - [Equipment](#)
    - [Operational Parameters](#)
    - [Media Relations](#)
  - [Maps](#)
- 

## Team

---

- **Scott Houpermans - KQ4EOL - 540-446-8480 ECIC**
  - Leigh Anderson - KN4MTD
  - Mike Carrancho - KV4RC
  - Megan Cheeks - N4MEG
  - Chris Collins - KN4LLC
  - David Garvin - NO3B
  - Larry Just - KO4DCT
  - John Launius - KX4JTL
  - Erik Misavage - KI4BXU
  - John Quaderer - AF4JQ
  - Tim Wagner - KN4EXG
  - Return to [Summary](#)
- 

## Assignments

---

<div>2024 Blue-Gray Half Marathon</div> <div>Sunday, 8 December 2024</div>					
<div> <div> <div>Net Control on Site: 0630</div> <div>Station Check in: 0700</div> <div>Start Half Marathon: 0730</div> </div> <div> <div>Primary: K4TS VHF Repeater 147.015 (+) PL 79.7</div> <div>Alternate: AE4ML UHF Repeater 442.850 (+) PL 79.7</div> </div> </div>					
	Station Name	Location	Call	Name	E-Mail / Remarks
1	Start-Finish/Net Control	West End of Parking Lot Old Mill Park Aid Station	KI4BXU	Erik Misavage	
3	Medical Liaison				
4	Director Shadow	Mobile & Portable w/Director (Kristen Loescher)	KQ4EOL	Scott Houppermans	
5	Water Point 1 *	Madison & Littlepage <i>Move to Water Point 5 after Last Runner</i>	KV4RC	Mike Carrancho	
6	Water Point 2	Heritage Trail West of Spur Near Old Mill Park	KN4EXG	Tim Wagner	
7			KN4MTD	Leigh Anderson	
8	Water Point 3 Aid Station	Fall Hill Trail Near Wegman's	KO4DCT	Larry Just	
9	Water Point 4	Normandy Drive Near Cut-Thru to Heritage Trail	KX4JTL	John Launius	
10	Water Point 5 *	<i>Move from Water Point 1</i> Heritage Trail After Last Runner	KV4RC	Mike Carrancho	
11	Observation Fall Hill Trail	7-11 Parking Lot Fall Hill Avenue	AF4JQ	John Quaderer	
12	Turnaround	Gordon W. Shelton Blvd.	NO3B	David Garvin	
13			N4MEG	Megan Cheeks	
14	Traffic Circle	Traffic Circle on Fall Hill Avenue	KN4LLC	Chris Collins	

https://d.docs.live.net/e46409c99474e2d5/Documents/2024 SignUp-Assignment Blue and Gray - working.xlsx

1 of 1

[Assignments](#)

Return to [Summary](#)

Course Access

No special access is required for the course.

Return to [Summary](#)

# Check-in

---

Check-ins are at 0700 for this event. Please be on station and ready for Net Control to start check-ins promptly at 0700. The race starts at 0730,

Return to [Summary](#)

---

## Mission

---

Our primary mission is eyes on the course to provide safety. In the event of a emergency, contact Net Control as soon as possible. If it is a life or death medical emergency 911 is an option. Safety is our number one job.

Our secondary job is to relay information to/from event staff. As part of this please relay the first male and female runner past your station with bib number for each race.

Return to [Summary](#)

## Parking

Do not park on the actual race course or block anyone's driveway. There are plenty of cross streets close to all locations.

Return to [Summary](#)

## Equipment

Please have your RVARC vest on if you have one. Please let me know if you don't have one and I'll make arrangement to get you a loaner in advance. I will also make sure they are available for pickup and return to Net Control on race day.

This event can easily be worked with an HT and 5W by all stations.

Return to [Summary](#)

## Operational Parameters

Our primary repeater with be the K4TS VHF 147.015MHz (+) PL79.7 machine.

Our backup repeater will be the the AE4ML UHF 442.850MHz (+) PL79.7 machine.

Please program both into your radio prior to the event. Net control, please try to monitor both frequencies at all times if possible.

Net control will have everyone's cell phone number.

Return to [Summary](#)

## Media Relations

Any questions asked by the public or the media, are to be directed to the Turkey Trot staff members. Fell free to answer question about amateur radio. We are all spread out, so spreading the word about amateur radio will be everyone's job.

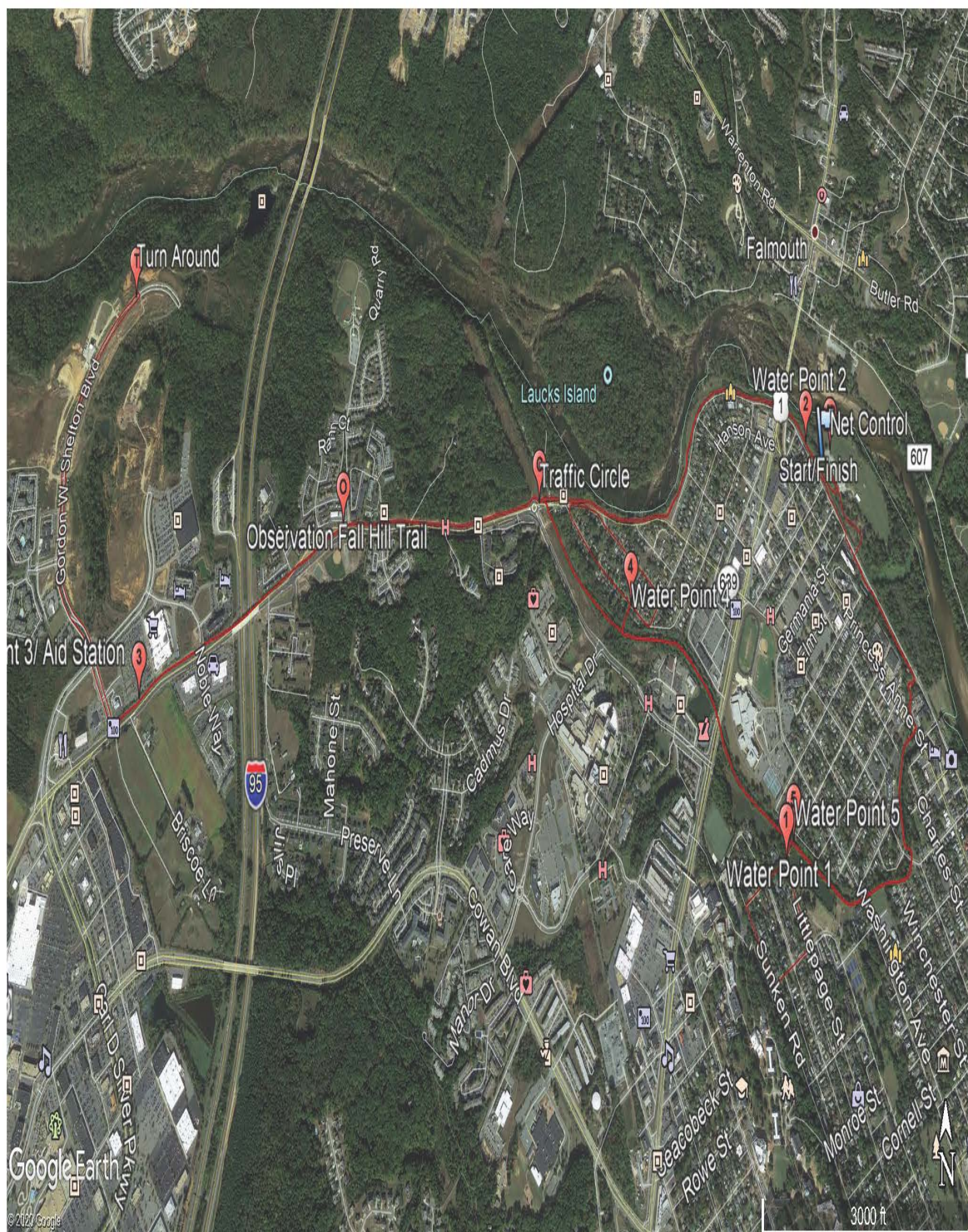
Return to [Summary](#)

---

# Maps

Below is the map of the Blue and Grey Half Marathon and a Google Earth KMZ file of the race.

## Blue and Grey Half Marathon Map



[Blue & Grey Half Marathon Map](#)

Google Earth KMZ file (Right click and "Save Link As" to download.) [Blue Grey Half Marathon.kmz](#)

Return to [Summary](#).