

Great Train Race Plan of Action

Version: 20250503 v3 (pdf of OpPlan for download - [GTR OpPlan.pdf](#))

Overview

- [Team](#)
 - [Assignments](#)
 - [Course Access](#)
 - [Check-In](#)
 - [Mission](#)
 - [Parking](#)
 - [Equipment](#)
 - [Operational Parameters](#)
 - [Media Relations](#)
 - [Maps](#)
-

Team

- **KN4RPA - Scott Larimer- ECIC (540)604-3196**
- KV4RC - Mike Carrancho
- KN4LLC - Chris Collins
- KQ4EOL - Scott Houpermans
- AF4JQ - John Quaderer
- W0OYA - Stephen Spencer
- N4VT - Andy Thompson

Return to [Summary](#).

Assignments

Great Train Race Sunday, 4 May 2025

Net Control on Site: 0630 **Station Check in:** 0700 **Start of Races:** 0730 (Some roads are closed at 0530)
Primary: AE4ML UHF Repeater 442.850 (+) PL 79.7 **Alternate:** K4TS VHF Repeater 147.015 (+) PL 79.7

	Station Name	Location	Call	Name	E-Mail / Cell Phone
1	Net Control	Roof Parking Garage	N9VT	Andy Thompson	
2	Start	Caroline & Sophia for 1 mi then 1/2 block up Caroline for start of 1/2 mi	KN4LLC	Chris Collins	
3	Medical Liaison	Behind Train Station	AF4JQ	John Quaderer	
4	Director Shadow	Roving with Race Director	KN4RPA	Scott Larimer	
5	Williams	Roving up & down Williams	KQ4EOL	Scott Houpermans	
6	Sophia -> Caboose	Roving up & down middle of Sophia/ Then Caboose Start	W00YA	Stephen Spencer	
7	Finish	City Docks	KV4RC	Mike Carrancho	

[https://d.docs.live.net/e46409c99474e2d5/Documents/Event Coordination/2025/Great Train Race/2025 SignUp-Great Train Race - Working.xlsx](https://d.docs.live.net/e46409c99474e2d5/Documents/Event%20Coordination/2025/Great%20Train%20Race/2025%20SignUp-Great%20Train%20Race-Working.xlsx)

1 of 1

[Assignments](#)

Return to [Summary](#).

Course Access

No special access is required for the course.

The event organizer do require all volunteers to register with them due to the large number of children involved in this event. Please register at

<https://runsignup.com/Race/Volunteer/VA/Fredericksburg/TheGreatTrainRace>

Return to [Summary](#).

Check-in

Net Control is to be on site setting up no later than 0630.

Check-ins are at 0700 for this event. Please be on station and ready for Net Control to start check-ins promptly at 0730.

The race starts at 0730. The last heat starts at 1100. Most stations will be released by 1045 at the latest.

Return to [Summary](#).

Mission

Our primary mission is eyes on the course to provide safety. In the event of a emergency, contact Net Control as soon as possible. If it is a life or death medical emergency 911 is an option. Safety is our number one job. This also includes helping to reunite children with their lost parents. Parents have a habit of getting lost in downtown and need to be reunited with their children. We have 2-3 cases a year. Relay pertinent information to Net Control. They will get the information to race staff to help track everyone down.

Our secondary job is to relay information to/from event staff. As part of this please relay the first male and female runner past your station with bib number for each race.

Return to [Summary](#).

Parking

Do not park on the actual race course or block anyone's driveway. There are plenty of side streets to park on or the parking garage downtown to use. Please do not park in the Church parking lot.

Please print the attached [Parking Placard](#) (right click and save). Print it and display it in your windshield. This will help you get through any street closures and into parking lots to get to your locations.

Return to [Summary](#).

Equipment

Please have your RVARC vest on if you have one. Please let me know if you don't have one and I'll make arrangement to get you a loaner in advance. I will also make sure they are available for pickup and return to Net Control on race day.

This event can easily be worked with an HT and 5W by all stations.

Return to [Summary](#).

Operational Parameters

This course can be worked with an HT and 5W (as long as you don't stand directly behind or under the railroad bridge).

Our primary repeater will be the AE4ML UHF 442.850MHZ (+) PL79.7 machine.

Our backup frequency will be the the K4TS 2M 147.015(+) PL79.7 machine.

Please program both into your radio prior to the event. Net control, will try to monitor both frequencies at all times if possible.

Net control will have everyone's cell phone number.

Return to [Summary](#).

Media Relations

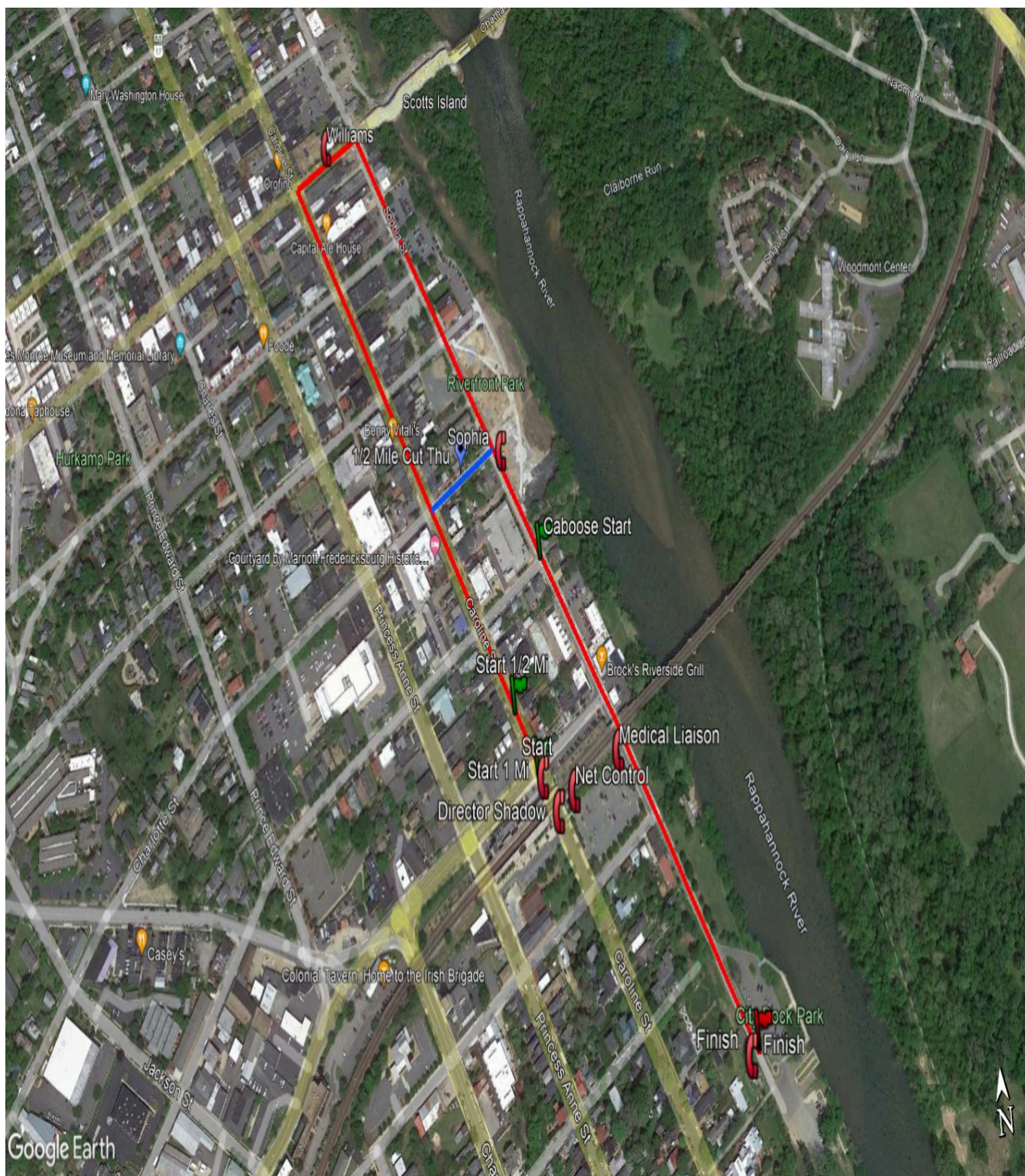
Any questions asked by the public or the media, are to be directed to the Grand Slamrock staff members. Fell free to answer question about amateur radio. We are all some what spread out, so spreading the word about amateur radio will be everyone's job.

Return to [Summary](#).

Maps

Below is the map Google Earth kmz of the Great Train Race.

Great Train Race Map



[Heppe 15K Race Map](#)

Google Earth KMZ file (Right click and "Save Link As" to download.) [Great Train Race.kmz](#)

Return to [Summary](#).